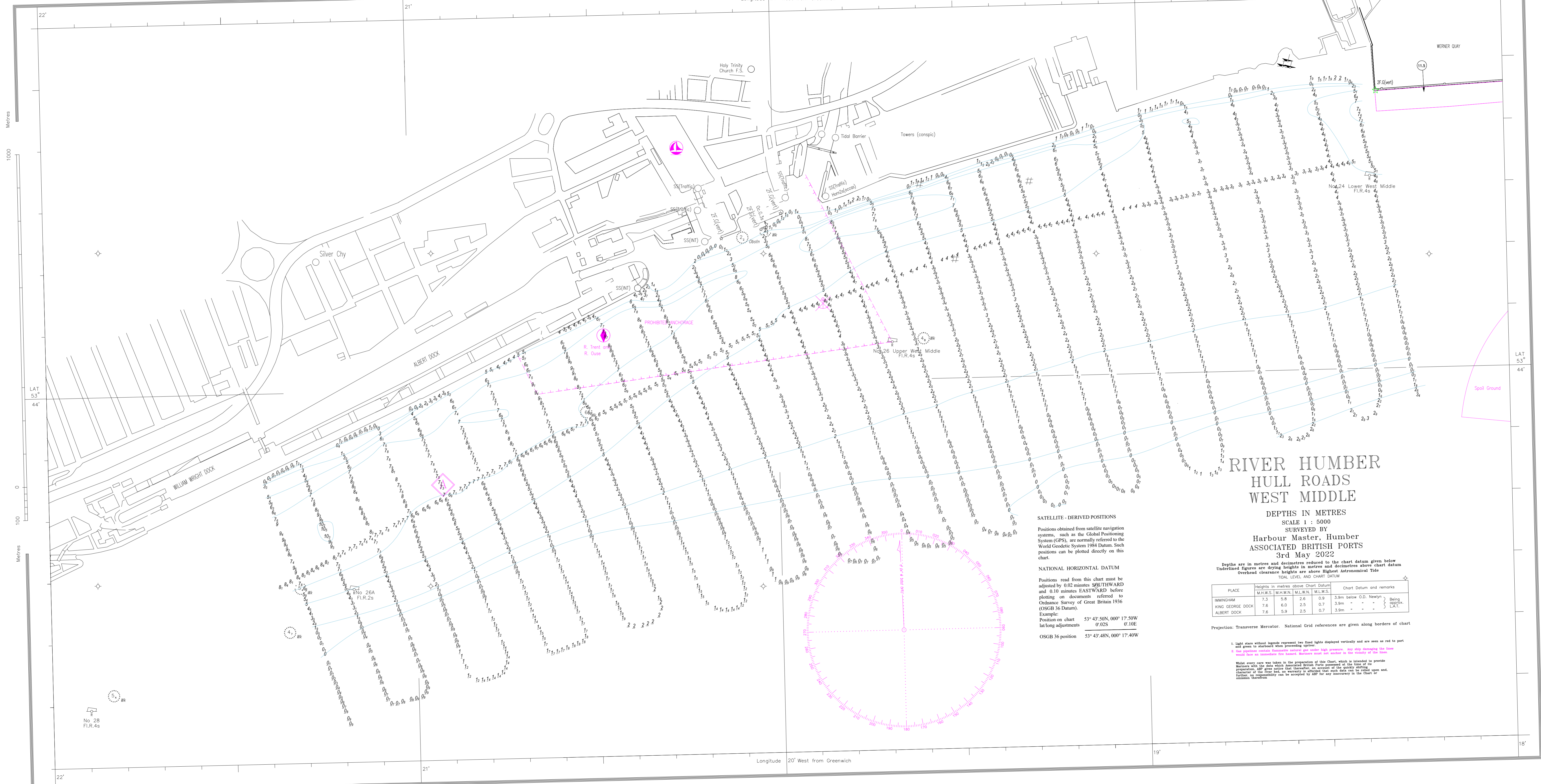


WGS 84 POSITIONS can be plotted directly on this chart



RIVER HUMBER HULL ROADS WEST MIDDLE

DEPTHS IN METRES
SCALE 1 : 5000
SURVEYED BY
Harbour Master, Humber
ASSOCIATED BRITISH PORTS
3rd May 2022

Depths are in metres and decimetres reduced to the chart datum given below
Underlined figures are above highest Astronomical Tide
Overhead clearance heights are above Highest Astronomical Tide

PLACE	Heights in metres above Chart Datum				Chart Datum and remarks
	M.H.W.S.	M.H.W.N.	M.L.W.N.	M.L.W.S.	
HUMMINGHAM	7.3	5.8	2.6	0.9	3.9m below O.D. Newlyn
KING GEORGE DOCK	7.6	6.0	2.5	0.7	3.9m - - - } Being approx. LAT.
ALBERT DOCK	7.6	5.9	2.5	0.7	3.9m - - - }

SATELLITE - DERIVED POSITIONS

Positions obtained from satellite navigation systems, such as the Global Positioning System (GPS), are normally referred to the World Geodetic System 1984 Datum. Such positions can be plotted directly on this chart.

NATIONAL HORIZONTAL DATUM

Positions read from this chart must be adjusted by 0.02 minutes SOUTHWARD and 0.10 minutes EASTWARD before plotting on documents referred to Ordnance Survey of Great Britain 1936 (OSGB 36 Datum).

Example:
Position on chart 53° 43' 50N, 000° 17' 50W
lat/long adjustments 0'.02S 0'.10E

OSGB 36 position 53° 43' 48N, 000° 17' 40W

Projection: Transverse Mercator. National Grid references are given along borders of chart.

1. Light stars without legends represent two fixed lights displayed vertically and are seen as red to port and green to starboard when proceeding upriver.

2. One position contains flammable vapours get under this pressure - do not dampen the lines - would lose an immediate fire hazard. Numbers must not number in the vicinity of the lines.

What every care was taken in the preparation of this Chart, which is intended to provide Mariners with the data which associated British Ports possessed at the time of its production. AMP gives notice that thereafter, on account of the quick shifting character of the river bed, no warranty is offered that such data can be relied upon and, further, no responsibility can be accepted by AMP for any inaccuracy in the Chart or omissions therefrom.